



Apartment 309, Portland 88, 55 Ormeau Road, Belfast, BT7 1FD

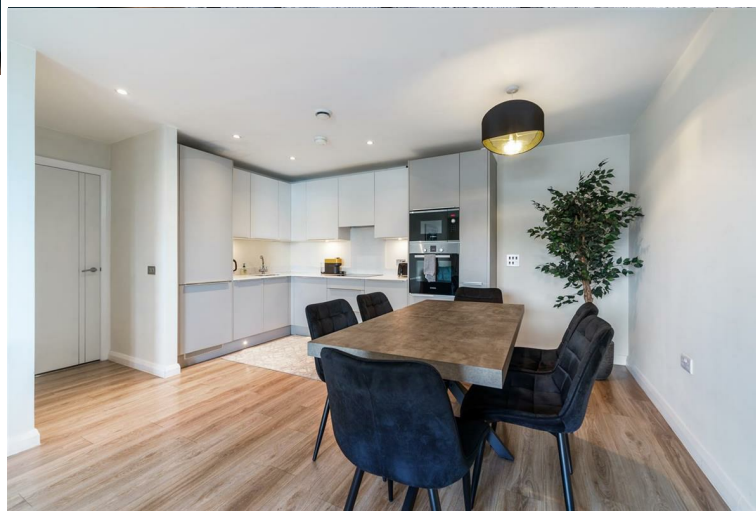
- Luxury, Third Floor Apartment
- Lounge Through Dining Room
- Deluxe Bathroom
- PVC Double Glazing
- Convenient Location
- Two Bedroom; Principal En Suite
- Modern Fitted Kitchen
- High-Efficiency Electric Heating System
- Lift Access
- Ideal First Time Buy / Buy To Let

Offers Over £209,950

EPC Rating C



55 Ormeau Road, Belfast, BT7 1FD



PROPERTY DESCRIPTION

ACCOMMODATION

COMMUNAL ENTRANCE HALL

Intercom entry system. Lift and stair access to upper floors.

PRIVATE ENTRANCE HALL

UTILITY STORE

Plumbed for automatic washing machine.



LOUNGE THROUGH KITCHEN WITH INFORMAL DINING AREA 24'8" x 15'4" (wps)

Luxury, fitted kitchen with range of high and low level storage units with contrasting quartz worktop. Inlaid stainless steel 1.5 bowl sink unit. Integrated touch screen Bosch ceramic hob with extractor hood over. Integrated Bosch oven and microwave. Integrated fridge freezer and dishwasher. Quartz splashback and upstands to walls. Wood laminate floor covering. Feature window to front elevation.

PRINCIPAL BEDROOM 12'5" x 10'9" (wps)

Wall to wall fitted wardrobes in mirror panelled sliding doors. Feature window to front elevation.

DELUXE EN SUITE SHOWER ROOM

Contemporary, white, three piece suite comprising fully tiled shower enclosure, wash hand basin and concealed cistern WC. Thermostat controlled mains shower unit with drench shower head. Towel radiator. Part tiling to walls. Tiled floor.

BEDROOM 2 12'6" x 8'9" (wps)

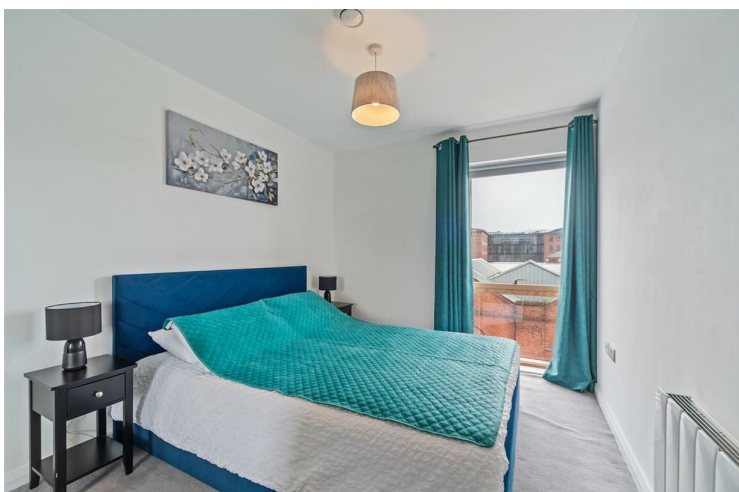
Fitted wardrobe in mirror panelled sliding doors. Feature window to front elevation.

DELUXE BATHROOM

Contemporary, white, three piece suite comprising tiled encased bath, wash hand basin and concealed cistern WC. Thermostat controlled mains shower and glass shower screen over bath. Towel radiator. Part tiling to walls. Tiled floor.

IMPORTANT NOTE TO ALL POTENTIAL PURCHASERS

Every care has been taken with the preparation of these particulars, but complete accuracy cannot be guaranteed. If there is any point, which is of particular importance to you, please obtain professional confirmation. Alternatively, we will be pleased to check the information for you. All measurements quoted are approximate. The Fixtures, Fittings & Appliances have not been tested and therefore no guarantee can be given that they are in working order. Photographs are reproduced for general information and it cannot be inferred that any item shown is included in the sale.





**COLIN
GRAHAM
RESIDENTIAL**
...WE SELL HOUSES

Luxury, two bedroom, third floor, city centre apartment, situated within the recently constructed Portland 88 development, Ormeau Road, Belfast.

The property comprises communal entrance hall, with lift and stair access to upper floors, private entrance hall, lounge through dining room, modern fitted kitchen, utility store, two well-proportioned bedrooms, to include principal en suite, and separate, deluxe bathroom.

Other attributes include high-efficiency electric heating system, PVC double glazing, and convenient location.

Ideal first time buy / buy to let investment alike.

Early viewing highly recommended to avoid disappointment.



Energy Efficiency Rating

	Current	Potential
Very energy efficient - lower running costs		
(92 plus) A		
(81-91) B		
(69-80) C	77	77
(55-68) D		
(39-54) E		
(21-38) F		
(1-20) G		
Not energy efficient - higher running costs		
Northern Ireland	EU Directive 2002/91/EC	

Agents Note: Whilst every care has been taken to prepare these sales particulars, they are for guidance purposes only. All measurements are approximate and for general guidance purposes only and whilst every care has been taken to ensure their accuracy, they should not be relied upon and potential buyers are advised to recheck the measurements

INVESTORS IN PEOPLE
We invest in people Gold

PRS Property Redress Scheme

Proudly sponsoring



Awards



WE ARE MACMILLAN.
CANCER SUPPORT